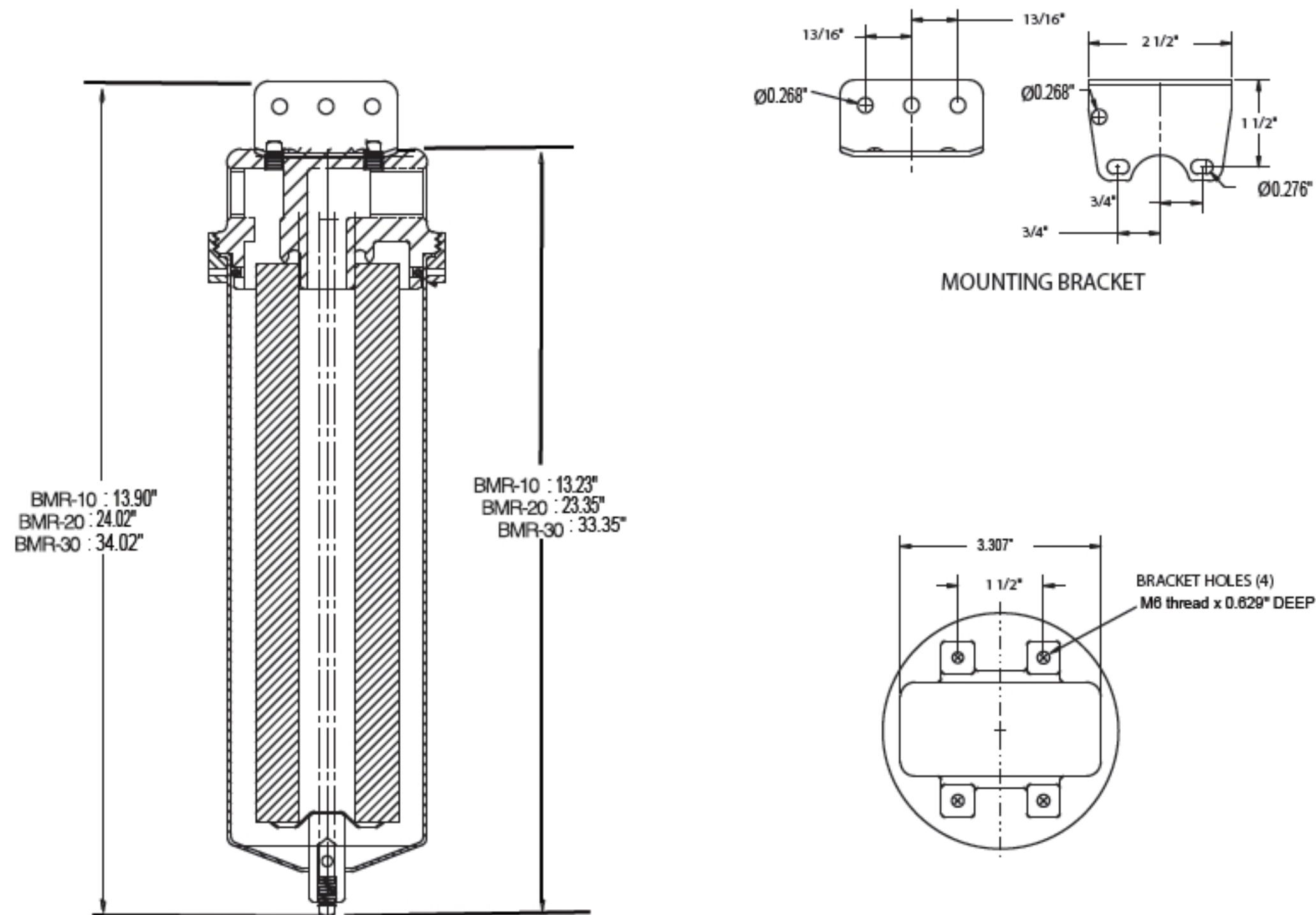


MODEL	QUANTITY (LENGTH) OF CARTRIDGES	MAXIMUM FLOW RATE* GPM (LPM)	MAXIMUM DIAMETER CARTRIDGE	DRAIN SIZE	DIMENSIONS	
BMR-10	1 (9 3/4 - 10")	7 (26.5)	2 3/4"	1/4"	as drawing	as drawing
BMR-20	1 (19 1/2 - 20")	14 ( 53)	2 3/4"	1/4"	as drawing	as drawing
BMR-30	1 (30")	21 ( 79.5)	2 3/4"	1/4"	as drawing	as drawing

\* Based upon 7 gpm (26.5 lpm) per 10" cartridge length with a 25 micron wound cartridge at 2 PSID clean and a viscosity of 1 cps. Flow rates are guidelines only. Actual flow rates are based upon fluid, viscosity, cartridge type, micron ratings and other factors

## Dimensions



## Ordering Guide (Example: BMRS4-106-B)

<b>BMR</b>	<b>S4</b>	<b>-</b>	<b>10</b>	<b>6</b>	<b>-</b>	<b>-</b>	<b>B</b>
MODEL	MATERIAL		CARTRIDGE LENGTH	PIPE SIZE FNPT		OPTIONS	GASKET
BMR	S4=304Lheed + 304Lsump S6=316Lheed + 316Lsump		10 = 9 3/4-10" 20 = 19 1/2-20" 30 = 29 1/2 -30"	6 = 3/4"		Blank = None BSP = BSP thread GP4* = 1/4" Gauge Ports NPT =NPT thread	B = Buna N (Standard) E = EPR S = Silicone V = Viton

\* When specifying vents or gauge ports, the location must be identified as I= Inlet, O = Outlet and I/O = Inlet and Outlet (Example: GP4I/O)

## Customization

Housings may be customized to meet your precise requirements. Contact BML' s technical support staff or your distributor for more information.