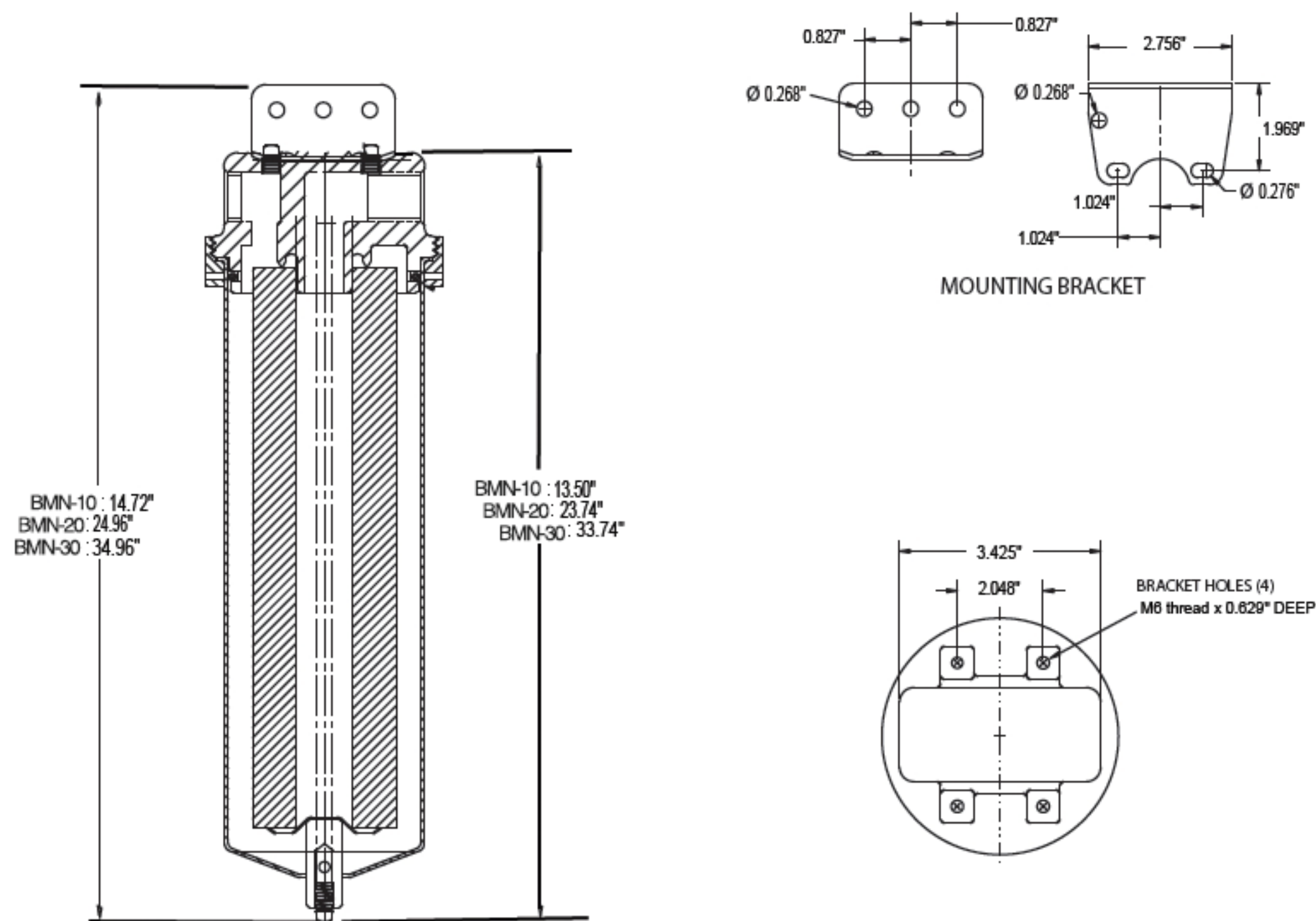


MODEL	QUANTITY (LENGTH) OF CARTRIDGES	MAXIMUM FLOW RATE* GPM (LPM)	MAXIMUM DIAMETER CARTRIDGE	DRAIN SIZE	DIMENSIONS	
					A	B
BMN-10	1 (9 3/4 - 10")	7 (26.5)	2 3/4"	1/4"	as drawing	as drawing
BMN-20	1 (19 1/2 - 20")	14 (53)	2 3/4"	1/4"	as drawing	as drawing
BMN-30	1 (30")	21 (79.5)	2 3/4"	1/4"	as drawing	as drawing

* Based upon 7 gpm (26.5 lpm) per 10" cartridge length with a 25 micron wound cartridge at 2 PSID clean and a viscosity of 1 cps. Flow rates are guidelines only. Actual flow rates are based upon fluid, viscosity, cartridge type, micron ratings and other factors

Dimensions



Ordering Guide (Example: BMNS4-106-B)

BMN	S4	-	10	6	-	-	B
MODEL	MATERIAL		CARTRIDGE LENGTH	PIPE SIZE FNPT		OPTIONS	GASKET
BMN	S4=304Lheed + 304Lsump S6=316Lheed + 316Lsump		10 = 9 3/4-10" 20 = 19 1/2-20" 30 = 29 1/2 -30"	6 = 3/4"		Blank = None BSP = BSP thread NPT =NPT thread	B = Buna N (Standard) E = EPR S = Silicone V = Viton

* When specifying vents or gauge ports, the location must be identified as I= Inlet, O = Outlet and I/O = Inlet and Outlet (Example: GP4I/O)

Customization

Housings may be customized to meet your precise requirements. Contact BML' s technical support staff or your distributor for more information.